

Fleet Services

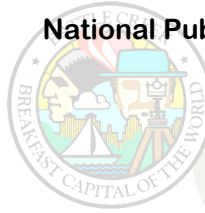
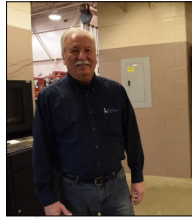
National Public Works Week 2016—Always There

May 16, 2016



If it breaks, we'll fix it."

-Steve Hoffman
Fleet Services Supervisor



Experienced technicians keep city vehicles in working order

Walking into Fleet Services, its own building at the Department of Public Works complex (150 S. Kendall St.), you'd hear a loud mix of music and power tools.

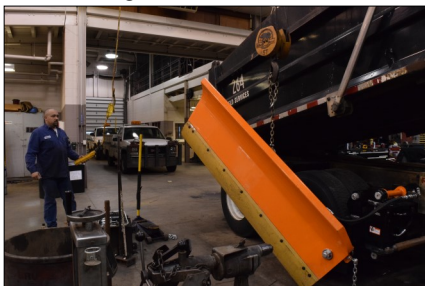
Technicians work to fix, maintain and create equipment from chain saws to fire trucks, staged near their tool boxes closer to the size of the fire truck.

Fleet hires from all backgrounds—it's all about experience here. Many technicians start as mechanics and technicians at car dealerships. They could have a degree in the automotive field.

Because the city's techs work on our own fleet of vehicles, national Automotive Service Excellence certification isn't required, but the city does require it of our crew. Technicians renew this every five years. The State of Michigan also has a Mechanic Certification program.

While city fleet techs don't paint vehicles, they do just about everything else. That includes fabrication—building things from scratch—something this group is good at.

This day, Jason Bolen is working on a wing plow—a side plow blade that swings out from the side of a snow plow to improve the plow's solo performance. Often,



plows move in tandem or convoy.

Another creation was a back conveyor belt

on a dump truck. Something that costs \$7,000 new, the city built our own for \$3,500.

There's a lot of satisfaction that comes from this work, said Fleet Services Supervisor Steve Hoffman. While very few people get into the career, it's a "very satisfying job."

And techs have their specialties—Jason is a great fabricator; Steve Scarbrough and Clark Shaffer work on fire vehicles; Ben Harden and Mike Walter work in parts; Dave Lanham outfits police cruisers.



Greg Huffman is installing shelving in this transit van for Engineering staff.



six months, vehicle computers change, and municipal fleets aren't getting any smaller.

Always There

When you wake up in the morning and your street is plowed.

When fire equipment has a hiccup at the scene of a fire or medical emergency and a technician comes out.

When a wind storm takes down trees.

Fleet Services maintains those vehicles and ensures they're all working properly, so other city departments can carry out the work of serving this community.

Fleet Facts

\$80,000-100,000	tool investment per tech
\$10,000-12,000	diagnostic software cost
\$500ish	new cordless tool cost
500+	pieces of city equipment
9	technicians
2	parts staff
2	custodians
2	supervisors

The group is working on more training opportunities—industry changes come every four to