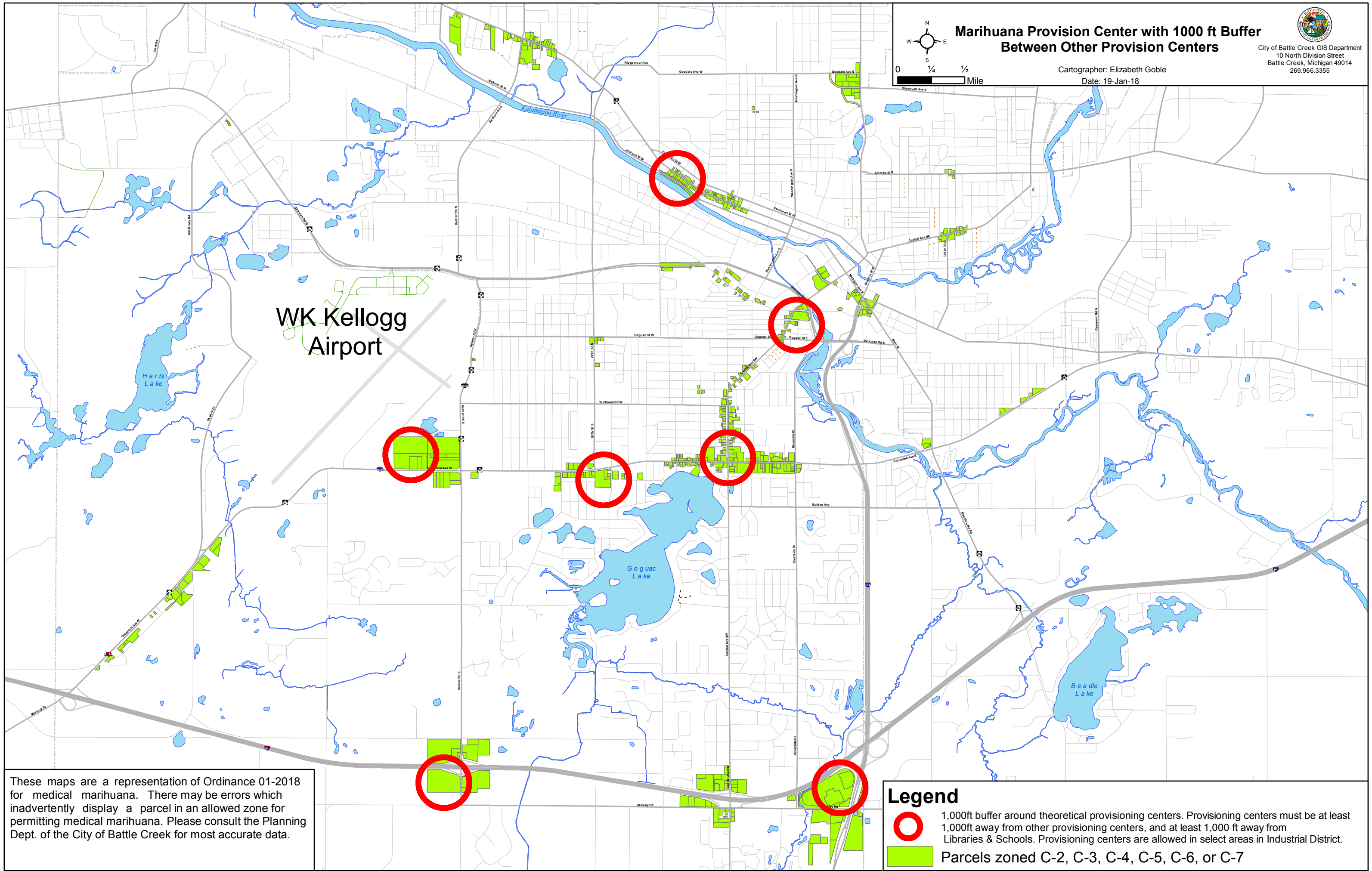
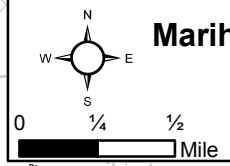




### Marihuana Provision Center with 1000 ft Buffer Between Other Provision Centers

Cartographer: Elizabeth Goble  
Date: 19-Jan-18



WK Kellogg  
Airport



Harts  
Lake

Goguc  
Lake

Beadle  
Lake

These maps are a representation of Ordinance 01-2018 for medical marihuana. There may be errors which inadvertently display a parcel in an allowed zone for permitting medical marihuana. Please consult the Planning Dept. of the City of Battle Creek for most accurate data.

**Legend**

-  1,000ft buffer around theoretical provisioning centers. Provisioning centers must be at least 1,000ft away from other provisioning centers, and at least 1,000 ft away from Libraries & Schools. Provisioning centers are allowed in select areas in Industrial District.
-  Parcels zoned C-2, C-3, C-4, C-5, C-6, or C-7