

# 2026

## Calhoun County Community Calendar

BATTLE CREEK AREA CLEAN WATER PARTNERS







[www.bcwater.org](http://www.bcwater.org)

## THE BATTLE CREEK AREA CLEAN WATER PARTNERS

are proud to present this 2026 wall calendar for the residents of Calhoun County. The featured photographs were all taken within the Kalamazoo River Watershed within Calhoun County by local photographers. The purpose of the calendar is to display the many beautiful areas within our county, to educate the public on protecting our stormwater systems, and to bring focus to an unseen resource – groundwater, which is the source of drinking water in Calhoun County. Both surface water and groundwater are overlooked for the value and impact they have within our watershed. You can follow the simple steps outlined in the calendar to help protect our water from sources of pollution. The steps we take now will help protect our water for future generations.

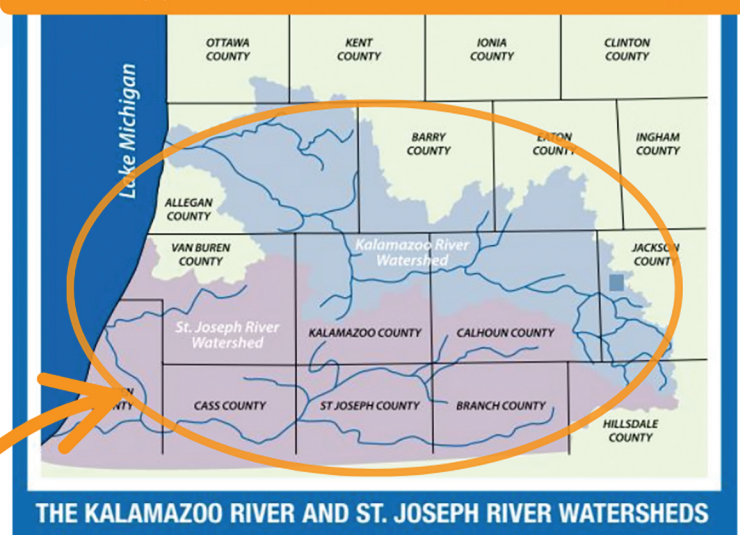
The Battle Creek Area Clean Water Partners are the City of Battle Creek; the City of Springfield; the Calhoun County Water Resources Commissioner; the townships of Bedford, Emmett, Leroy, Newton, and Pennfield; the Hart-Dole-Inouye Federal Center; Kellogg Community College; and the Battle Creek and Lakeview area schools joining together with the common goal of protecting the waterways in our area.

## SURFACE WATER

When it rains water flows across hard surfaces to storm drains. Water then flows **UNTREATED** to the nearest river, lake or pond. Rainwater will carry garbage, misc. debris and yard waste with it polluting our local waterways.



What happens here flows towards Lake Michigan



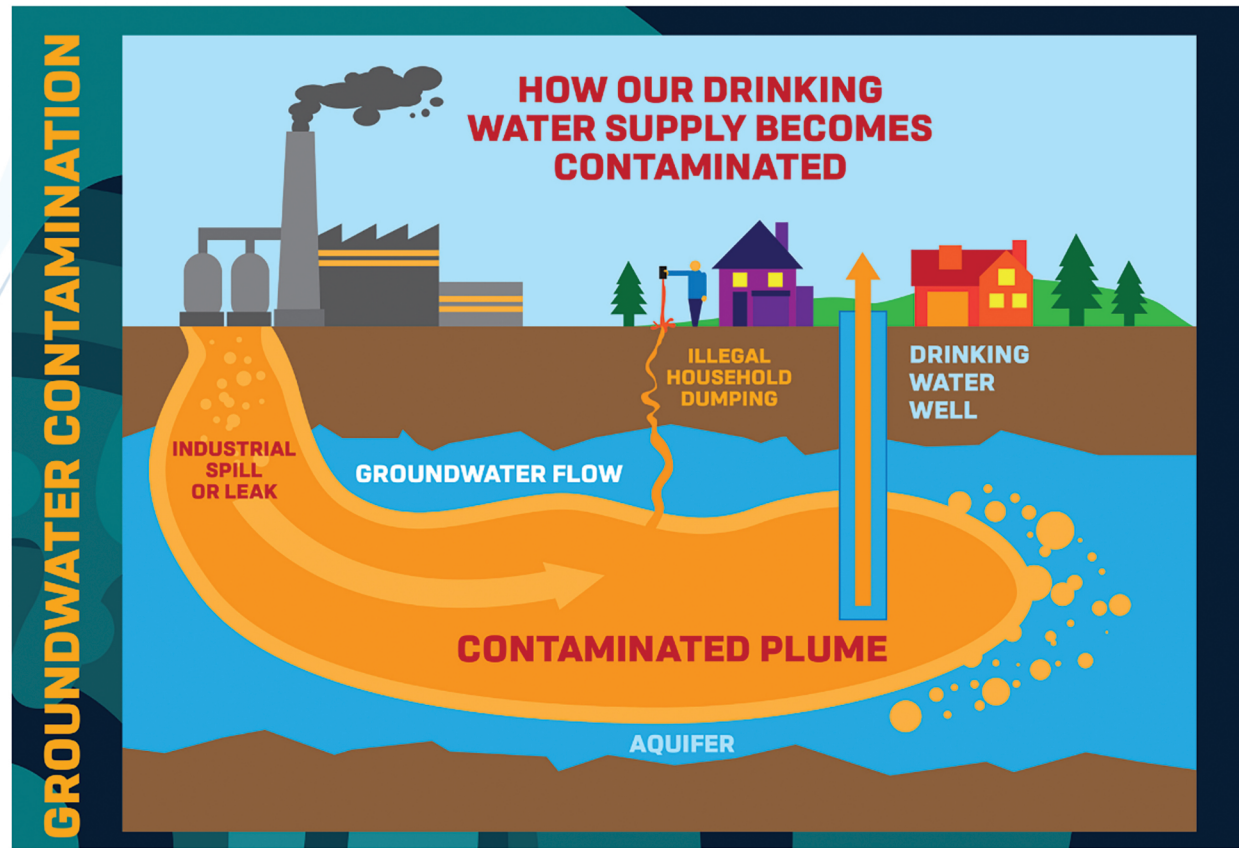
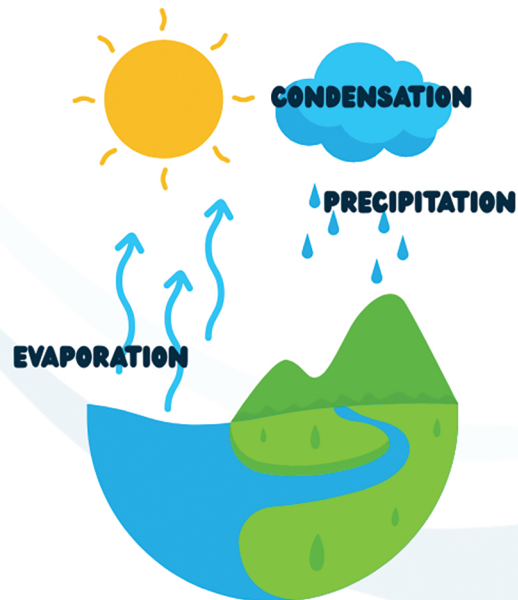
THE KALAMAZOO RIVER AND ST. JOSEPH RIVER WATERSHEDS





**WATER** is something we often take for granted. From the lakes and streams we play and fish in, to the water we use every day to nourish our bodies, water plays an important role in our lives.

It's a natural resource that we simply can't live without. That's why it is our responsibility to protect our water resources for future generations. In order to do that, we need to better understand the water cycle (shown below) and how it works.



## WELLHEAD PROTECTION PLAN

For the health and well-being of our communities, a Wellhead Protection Plan was developed for the City of Battle Creek, Pennfield and Emmett townships as our drinking water comes from an aquifer below these communities. Visit free household hazardous waste collections to dispose of unwanted liquids, chemicals, and other materials, as only rain/snow should fall on the ground.

### How do we protect our water?

- \*Follow our stormwater ordinance
- \*Eliminate illicit discharges
- \*Eliminate failing septic systems
- \*Educate community on stormwater protection programs
- \*Inspect storm outfalls & inlets
- \*Clean up yard waste & excess fertilizer to help reduce phosphorus pollution

Please note that we were unable to include all information pertaining to groundwater, surface water, recycle events and more fun volunteer activities. Routinely visit **bcwater.org** for more information.





Winter Views of Kalamazoo River  
by Nicole Rinckley





Drinking water comes from deep within the ground so remember it is our actions that can make a difference. Dispose of your waste properly.

Tip: DE-ICING: Shovel snow and ice often to limit use of sand, salt and de-icing chemicals.

Act: Visit the Salt Watch site to learn more about salt's impact on our water resources:

<https://iwla.org/salt-watch/>

SUNDAY

MONDAY

TUESDAY

WEDNESDAY

THURSDAY

FRIDAY

SATURDAY

DECEMBER						
Su	Mo	Tu	We	Th	Fr	Sa
	1	2	3	4	5	6
7	8	9	10	11	12	13
14	15	16	17	18	19	20
21	22	23	24	25	26	27
28	29	30	31			

FEBRUARY						
Su	Mo	Tu	We	Th	Fr	Sa
1	2	3	4	5	6	7
8	9	10	11	12	13	14
15	16	17	18	19	20	21
22	23	24	25	26	27	28

1

2

3

New Year's Day

4

5



Online Rain Barrel & Composter Sale, visit [bcwater.org](http://bcwater.org)

6

7

8

9

10

11

12

13

14

15

16

17

18

19

Martin Luther King Jr. Day

20

21

22

23

24

25

26



Enter The Kalamazoo River Watershed Photo Contest! Visit [bcwater.org](http://bcwater.org)

27

28

29

30

31



2026

For more information on how you can do your part

visit the Battle Creek Area Clean Water Partners at [www.bcwater.org](http://www.bcwater.org)





February Sky on Cedar Lake  
by Craig Hewitt






# February

*Water that flows within Calhoun County will end up in Lake Michigan.*

**"Do unto those downstream as you would have those upstream do unto you." -Wendell Berry**

**Tip: Household Cleaners:** Protect your drinking water. Never pour household cleaners down the drains, sinks or onto the ground.

**Act:** Visit USEPA's website for information on chemical products.  
[www.epa.gov/saferchoice](http://www.epa.gov/saferchoice)

SUNDAY	MONDAY	TUESDAY	WEDNESDAY	THURSDAY	FRIDAY	SATURDAY																																																																																				
<b>1</b>	<b>2</b>  Groundhog Day	<b>3</b>	<b>4</b>	<b>5</b>	<b>6</b>	<b>7</b>																																																																																				
<b>8</b>	<b>9</b>	<b>10</b>    Online Rain Barrel & Composter Sale, visit <a href="http://bcwater.org">bcwater.org</a>	<b>11</b>	<b>12</b>	<b>13</b>	<b>14</b>  Valentine's Day																																																																																				
<b>15</b>	<b>16</b>  Presidents' Day	<b>17</b>	<b>18</b>	<b>19</b>	<b>20</b>	<b>21</b>																																																																																				
<b>22</b>	<b>23</b>	<b>24</b>    Enter The Kalamazoo River Watershed Photo Contest! Visit <a href="http://bcwater.org">bcwater.org</a>	<b>25</b>	<b>26</b>	<b>27</b>	<b>28</b>																																																																																				
					<div> <div>JANUARY</div> <table> <tr><td>Su</td><td>Mo</td><td>Tu</td><td>We</td><td>Th</td><td>Fr</td><td>Sa</td></tr> <tr><td></td><td></td><td></td><td></td><td>1</td><td>2</td><td>3</td></tr> <tr><td>4</td><td>5</td><td>6</td><td>7</td><td>8</td><td>9</td><td>10</td></tr> <tr><td>11</td><td>12</td><td>13</td><td>14</td><td>15</td><td>16</td><td>17</td></tr> <tr><td>18</td><td>19</td><td>20</td><td>21</td><td>22</td><td>23</td><td>24</td></tr> <tr><td>25</td><td>26</td><td>27</td><td>28</td><td>29</td><td>30</td><td>31</td></tr> </table> </div>	Su	Mo	Tu	We	Th	Fr	Sa					1	2	3	4	5	6	7	8	9	10	11	12	13	14	15	16	17	18	19	20	21	22	23	24	25	26	27	28	29	30	31	<div> <div>MARCH</div> <table> <tr><td>Su</td><td>Mo</td><td>Tu</td><td>We</td><td>Th</td><td>Fr</td><td>Sa</td></tr> <tr><td>1</td><td>2</td><td>3</td><td>4</td><td>5</td><td>6</td><td>7</td></tr> <tr><td>8</td><td>9</td><td>10</td><td>11</td><td>12</td><td>13</td><td>14</td></tr> <tr><td>15</td><td>16</td><td>17</td><td>18</td><td>19</td><td>20</td><td>21</td></tr> <tr><td>22</td><td>23</td><td>24</td><td>25</td><td>26</td><td>27</td><td>28</td></tr> <tr><td>29</td><td>30</td><td>31</td><td></td><td></td><td></td><td></td></tr> </table> </div>	Su	Mo	Tu	We	Th	Fr	Sa	1	2	3	4	5	6	7	8	9	10	11	12	13	14	15	16	17	18	19	20	21	22	23	24	25	26	27	28	29	30	31				
Su	Mo	Tu	We	Th	Fr	Sa																																																																																				
				1	2	3																																																																																				
4	5	6	7	8	9	10																																																																																				
11	12	13	14	15	16	17																																																																																				
18	19	20	21	22	23	24																																																																																				
25	26	27	28	29	30	31																																																																																				
Su	Mo	Tu	We	Th	Fr	Sa																																																																																				
1	2	3	4	5	6	7																																																																																				
8	9	10	11	12	13	14																																																																																				
15	16	17	18	19	20	21																																																																																				
22	23	24	25	26	27	28																																																																																				
29	30	31																																																																																								



**2026**

For more information on how you can do your part

visit the Battle Creek Area Clean Water Partners at [www.bcwater.org](http://www.bcwater.org)





Reflections on Whitford Lake  
by Randy Wallace







**"Thousands have lived without love, not one without water."  
– W.H. Auden**

Tip: IRRIGATION: Learn plants' water needs and water appropriately.

Act: RAINWATER: Purchase a rain barrel to capture water. Rain barrels help reduce runoff that can carry contaminants into storm drains and into our waterways. Visit [bcwater.org](http://bcwater.org) for more information.

SUNDAY	MONDAY	TUESDAY	WEDNESDAY	THURSDAY	FRIDAY	SATURDAY																																																																																				
<b>1</b>	<b>2</b>	<b>3</b>	<b>4</b>	<b>5</b>	<b>6</b>	<b>7</b>																																																																																				
<b>8</b>	<b>9</b>	<b>10</b>	<b>11</b>	<b>12</b>	<b>13</b>	<b>14</b>																																																																																				
<b>15</b> Daylight Savings Begins	<b>16</b>  Online Rain Barrel & Composter Sale, visit <a href="http://bcwater.org">bcwater.org</a>	<b>17</b> St. Patrick's Day	<b>18</b>	<b>19</b>	<b>20</b> First day of spring	<b>21</b>  Electronics & Polystyrene #6 (Styrofoam) Recycle Event at DPW 150 S.Kendall St., Battle Creek from 9am-11am visit <a href="http://bcwater.org">bcwater.org</a>																																																																																				
<b>22</b>	<b>23</b>	<b>24</b>	<b>25</b>	<b>26</b>	<b>27</b> Calhoun County schools Spring Break through April 3	<b>28</b>																																																																																				
<b>29</b>	<b>30</b>	<b>31</b>	<div> <div>FEBRUARY</div> <table> <tr><td>Su</td><td>Mo</td><td>Tu</td><td>We</td><td>Th</td><td>Fr</td><td>Sa</td></tr> <tr><td>1</td><td>2</td><td>3</td><td>4</td><td>5</td><td>6</td><td>7</td></tr> <tr><td>8</td><td>9</td><td>10</td><td>11</td><td>12</td><td>13</td><td>14</td></tr> <tr><td>15</td><td>16</td><td>17</td><td>18</td><td>19</td><td>20</td><td>21</td></tr> <tr><td>22</td><td>23</td><td>24</td><td>25</td><td>26</td><td>27</td><td>28</td></tr> <tr><td></td><td></td><td></td><td></td><td></td><td></td><td></td></tr> </table> </div> <div> <div>APRIL</div> <table> <tr><td>Su</td><td>Mo</td><td>Tu</td><td>We</td><td>Th</td><td>Fr</td><td>Sa</td></tr> <tr><td></td><td></td><td></td><td>1</td><td>2</td><td>3</td><td>4</td></tr> <tr><td>5</td><td>6</td><td>7</td><td>8</td><td>9</td><td>10</td><td>11</td></tr> <tr><td>12</td><td>13</td><td>14</td><td>15</td><td>16</td><td>17</td><td>18</td></tr> <tr><td>19</td><td>20</td><td>21</td><td>22</td><td>23</td><td>24</td><td>25</td></tr> <tr><td>26</td><td>27</td><td>28</td><td>29</td><td>30</td><td></td><td></td></tr> </table> </div>				Su	Mo	Tu	We	Th	Fr	Sa	1	2	3	4	5	6	7	8	9	10	11	12	13	14	15	16	17	18	19	20	21	22	23	24	25	26	27	28								Su	Mo	Tu	We	Th	Fr	Sa				1	2	3	4	5	6	7	8	9	10	11	12	13	14	15	16	17	18	19	20	21	22	23	24	25	26	27	28	29	30		
Su	Mo	Tu	We	Th	Fr	Sa																																																																																				
1	2	3	4	5	6	7																																																																																				
8	9	10	11	12	13	14																																																																																				
15	16	17	18	19	20	21																																																																																				
22	23	24	25	26	27	28																																																																																				
Su	Mo	Tu	We	Th	Fr	Sa																																																																																				
			1	2	3	4																																																																																				
5	6	7	8	9	10	11																																																																																				
12	13	14	15	16	17	18																																																																																				
19	20	21	22	23	24	25																																																																																				
26	27	28	29	30																																																																																						



**2026**

For more information on how you can do your part

visit the Battle Creek Area Clean Water Partners at [www.bcwater.org](http://www.bcwater.org)





Great Blue Heron near Kalamazoo River Dam  
by Benjamin Young





# April

"To be without trees would, in the most literal way, to be without our roots."  
– Richard Mabey

Act: Adopt a storm drain. Keep it clean of leaves, dirt, grass clippings and other debris.

SUNDAY

MONDAY

TUESDAY

WEDNESDAY

THURSDAY

FRIDAY

SATURDAY

			<b>1</b>	<b>2</b>	<b>3</b>	<b>4</b>
<b>5</b>	<b>6</b>	<b>7</b>	<b>8</b>  Pre-paid ONLY! Rain Barrel/ Composter Pick Up at DPW 150 S. Kendall St., Battle Creek from 4pm-6pm visit bcwater.org	<b>9</b>	<b>10</b>  Good Friday	<b>11</b>
<b>12</b>  Easter Sunday	<b>13</b>	<b>14</b>	<b>15</b>  Tax Day	<b>16</b>	<b>17</b>	<b>18</b>
<b>19</b>	<b>20</b>  Earth Week	<b>21</b>	<b>22</b>  Administrative Professionals Day	<b>23</b>	<b>24</b>  Arbor Day	<b>25</b>
<b>26</b>	<b>27</b>	<b>28</b>	<b>29</b>	<b>30</b>	<div> <div> MARCH           Su Mo Tu We Th Fr Sa           1 2 3 4 5 6 7           8 9 10 11 12 13 14           15 16 17 18 19 20 21           22 23 24 25 26 27 28           29 30 31         </div> <div> MAY           Su Mo Tu We Th Fr Sa           3 4 5 6 7 8 9           10 11 12 13 14 15 16           17 18 19 20 21 22 23           24 25 26 27 28 29 30           31         </div> </div>	



2026

For more information on how you can do your part

visit the Battle Creek Area Clean Water Partners at [www.bcwater.org](http://www.bcwater.org)





Our National Bird at Kiwanis Youth Conservation Area  
by Helene Bocklund





# May

"A river cuts through rock not because of its power but because of its persistence." – Jim Watkins

Act: No wipes in the pipes! Those "flushable" wipes are not so flushable. They can clog pipes resulting in major problems on your own property and with equipment used in treating our wastewater.

SUNDAY

MONDAY

TUESDAY

WEDNESDAY

THURSDAY

FRIDAY

SATURDAY

APRIL						
Su	Mo	Tu	We	Th	Fr	Sa
			1	2	3	4
5	6	7	8	9	10	11
12	13	14	15	16	17	18
19	20	21	22	23	24	25
26	27	28	29	30		

JUNE						
Su	Mo	Tu	We	Th	Fr	Sa
	1	2	3	4	5	6
7	8	9	10	11	12	13
14	15	16	17	18	19	20
21	22	23	24	25	26	27
28	29	30				

1

2

3

4

5

6

7

8

9

10

11

12

13

14

15

16

Mother's Day

17

18

19



20

21

22

23

Enter The Kalamazoo River  
Watershed Photo Contest!  
Visit [bcwater.org](http://bcwater.org)

24

25

26

27

28

29

30

31

Memorial Day



2026

For more information on how you can do your part

visit the Battle Creek Area Clean Water Partners at [www.bcwater.org](http://www.bcwater.org)






Boat in the sky on Goguang Lake  
by Caleb Francisco





“Always be like water. Float in the times of pain or dance like waves along the wind which touches its surface.” – Santosh Kalwar

Tip: PET WASTE: Prevent bacterial contamination of our surface and groundwater by cleaning up anything “left behind” on your walk.

SUNDAY	MONDAY	TUESDAY	WEDNESDAY	THURSDAY	FRIDAY	SATURDAY
	1	2	3	4	5	6
7	8	9	10	11	12	13
14	15	16	17	18	19	20
21	22	23	24	25	26	27
Father's Day First day of summer		 Enter The Kalamazoo River Watershed Photo Contest! Visit <a href="http://bcwater.org">bcwater.org</a>			Juneteenth	
28	29	30				

MAY						
Su	Mo	Tu	We	Th	Fr	Sa
					1	2
3	4	5	6	7	8	9
10	11	12	13	14	15	16
17	18	19	20	21	22	23
24	25	26	27	28	29	30
31						

JULY						
Su	Mo	Tu	We	Th	Fr	Sa
			1	2	3	4
5	6	7	8	9	10	11
12	13	14	15	16	17	18
19	20	21	22	23	24	25
26	27	28	29	30	31	





Bridge Over Water on the Kalamazoo River  
by Olivia Rice





# July

**"We have a single mission: to protect and hand on the planet to the next generation." – Francois Hollande**

Tip: Never flush MEDICATIONS down the drain or toilet. They can end up in the ground and eventually in the water we share.

Act: Visit [www.drugfreebc.org](http://www.drugfreebc.org) for medicine disposal locations. (Most police departments and pharmacies have RedMed Boxes)

SUNDAY

MONDAY

TUESDAY

WEDNESDAY

THURSDAY

FRIDAY

SATURDAY

JUNE						
Su	Mo	Tu	We	Th	Fr	Sa
	1	2	3	4	5	6
7	8	9	10	11	12	13
14	15	16	17	18	19	20
21	22	23	24	25	26	27
28	29	30				

AUGUST						
Su	Mo	Tu	We	Th	Fr	Sa
						1
2	3	4	5	6	7	8
9	10	11	12	13	14	15
16	17	18	19	20	21	22
23	24	25	26	27	28	29
30	31					

**1**

**2**

**3**

**4**

Independence Day

**5**

**6**

**7**



Enter The Kalamazoo River Watershed Photo Contest!  
Visit [bcwater.org](http://bcwater.org)

**8**

**9**

**10**

**11**

**12**

**13**

**14**

**15**

**16**

**17**

**18**

**19**

**20**

**21**

**22**

**23**

**24**

**25**

**26**

**27**

**28**

**29**

**30**



**31**

**Last Day to Submit Photos:**  
Enter The Kalamazoo River Watershed Photo Contest!  
Visit [bcwater.org](http://bcwater.org)



**2026**

For more information on how you can do your part

visit the Battle Creek Area Clean Water Partners at [www.bcwater.org](http://www.bcwater.org)



Dancing on the Kalamazoo River  
by Collins Francisco







# August

**"To do good, you actually have to do something."**

**-Yvon Chouinard**

Tip: Properly close abandoned wells on your property as they can contaminate our groundwater. Call Calhoun County Public Health Department for more information 269-969-6370.

Act: SEPTIC SYSTEMS: Properly maintain septic systems as they can pollute both our surface and groundwater supply. Visit the EPA's SepticSmart site at: [epa.gov/septic](http://epa.gov/septic)

SUNDAY

MONDAY

TUESDAY

WEDNESDAY

THURSDAY

FRIDAY

SATURDAY

JULY						
Su	Mo	Tu	We	Th	Fr	Sa
			1	2	3	4
5	6	7	8	9	10	11
12	13	14	15	16	17	18
19	20	21	22	23	24	25
26	27	28	29	30	31	

SEPTEMBER						
Su	Mo	Tu	We	Th	Fr	Sa
		1	2	3	4	5
6	7	8	9	10	11	12
13	14	15	16	17	18	19
20	21	22	23	24	25	26
27	28	29	30			

						<b>1</b>
<b>2</b>	<b>3</b>	<b>4</b>	<b>5</b>	<b>6</b>	<b>7</b>	<b>8</b>
<b>9</b>	<b>10</b>	<b>11</b>	<b>12</b>	<b>13</b>	<b>14</b>	<b>15</b>
<b>16</b>	<b>17</b>	<b>18</b>	<b>19</b>	<b>20</b>	<b>21</b>	<b>22</b>
<b>23</b>	<b>24</b>	<b>25</b>	<b>26</b>	<b>27</b>	<b>28</b>	<b>29</b>
<b>30</b>	<b>31</b>					



**2026**

For more information on how you can do your part

visit the Battle Creek Area Clean Water Partners at [www.bcwwater.org](http://www.bcwwater.org)





Northern Lights Refletions on Graham Lake  
by Shota Ito





# September

"Unless someone like you cares a whole awful lot, nothing is going to get better. It's not." -Dr. Seuss

Act: Help reduce costly repairs and stinky backups in your home and in the city by disposing of fats, rags, oils, grease (FROG) in the trash - not in your drains.

SUNDAY	MONDAY	TUESDAY	WEDNESDAY	THURSDAY	FRIDAY	SATURDAY																																																																																																		
		1	2	3	4	5																																																																																																		
6	7 Labor Day	8	9	10	11	12																																																																																																		
13	14	15	16 KRAZY FOR THE KAZOO Register at bcwater.org	17	18	19																																																																																																		
20	21	22 First day of fall	23	24	25	26																																																																																																		
27	28	29	30	<div> <div>AUGUST</div> <table> <tr><td>Su</td><td>Mo</td><td>Tu</td><td>We</td><td>Th</td><td>Fr</td><td>Sa</td></tr> <tr><td></td><td></td><td></td><td></td><td></td><td></td><td>1</td></tr> <tr><td>2</td><td>3</td><td>4</td><td>5</td><td>6</td><td>7</td><td>8</td></tr> <tr><td>9</td><td>10</td><td>11</td><td>12</td><td>13</td><td>14</td><td>15</td></tr> <tr><td>16</td><td>17</td><td>18</td><td>19</td><td>20</td><td>21</td><td>22</td></tr> <tr><td>23</td><td>24</td><td>25</td><td>26</td><td>27</td><td>28</td><td>29</td></tr> <tr><td>30</td><td>31</td><td></td><td></td><td></td><td></td><td></td></tr> </table> </div> <div> <div>OCTOBER</div> <table> <tr><td>Su</td><td>Mo</td><td>Tu</td><td>We</td><td>Th</td><td>Fr</td><td>Sa</td></tr> <tr><td></td><td></td><td></td><td></td><td>1</td><td>2</td><td>3</td></tr> <tr><td>4</td><td>5</td><td>6</td><td>7</td><td>8</td><td>9</td><td>10</td></tr> <tr><td>11</td><td>12</td><td>13</td><td>14</td><td>15</td><td>16</td><td>17</td></tr> <tr><td>18</td><td>19</td><td>20</td><td>21</td><td>22</td><td>23</td><td>24</td></tr> <tr><td>25</td><td>26</td><td>27</td><td>28</td><td>29</td><td>30</td><td>31</td></tr> <tr><td></td><td></td><td></td><td></td><td></td><td></td><td></td></tr> </table> </div>			Su	Mo	Tu	We	Th	Fr	Sa							1	2	3	4	5	6	7	8	9	10	11	12	13	14	15	16	17	18	19	20	21	22	23	24	25	26	27	28	29	30	31						Su	Mo	Tu	We	Th	Fr	Sa					1	2	3	4	5	6	7	8	9	10	11	12	13	14	15	16	17	18	19	20	21	22	23	24	25	26	27	28	29	30	31							
Su	Mo	Tu	We	Th	Fr	Sa																																																																																																		
						1																																																																																																		
2	3	4	5	6	7	8																																																																																																		
9	10	11	12	13	14	15																																																																																																		
16	17	18	19	20	21	22																																																																																																		
23	24	25	26	27	28	29																																																																																																		
30	31																																																																																																							
Su	Mo	Tu	We	Th	Fr	Sa																																																																																																		
				1	2	3																																																																																																		
4	5	6	7	8	9	10																																																																																																		
11	12	13	14	15	16	17																																																																																																		
18	19	20	21	22	23	24																																																																																																		
25	26	27	28	29	30	31																																																																																																		



2026

For more information on how you can do your part

visit the Battle Creek Area Clean Water Partners at [www.bcwater.org](http://www.bcwater.org)



Majestic Sunrise at Spring Lake  
by Simon Thalmann







**"Never doubt that a small group of thoughtful, committed citizens can change the world; indeed, it is the only thing that ever has."**

**– Margaret Mead**

Tip: FALL LEAVES: Help keep leaves out of our storm drains by mulching them into the lawn, bagging for removal or hiring a lawn service for fall cleanup.

Act: Join us for Krazy for the Kazoo Stewardship Day.  
Visit [bcwater.org](http://bcwater.org) for more info.

SUNDAY

MONDAY

TUESDAY

WEDNESDAY

THURSDAY

FRIDAY

SATURDAY

SEPTEMBER						
Su	Mo	Tu	We	Th	Fr	Sa
		1	2	3	4	5
6	7	8	9	10	11	12
13	14	15	16	17	18	19
20	21	22	23	24	25	26
27	28	29	30			

NOVEMBER						
Su	Mo	Tu	We	Th	Fr	Sa
1	2	3	4	5	6	7
8	9	10	11	12	13	14
15	16	17	18	19	20	21
22	23	24	25	26	27	28
29	30					

**1**

**2**

**3**



8:00am-noon, visit  
[bcwater.org](http://bcwater.org)

**4**

**5**

**6**

**7**

**8**

**9**

**10**

Child Health Day

**11**

**12**

**13**

**14**

**15**

**16**

**17**

Columbus Day

Boss's Day

**18**

**19**

**20**

**21**

**22**

**23**

**24**

**25**

**26**

**27**

**28**

**29**

**30**

**31**

Halloween



**2026**

For more information on how you can do your part

visit the Battle Creek Area Clean Water Partners at [www.bcwater.org](http://www.bcwater.org)





Fall Sky on Cedar Lake  
by Craig Hewitt





# November

"The best time to plant a tree was 20 years ago...the next best time is NOW." -Chinese Proverb

Tip: RECYCLE RIGHT: Visit [www.bcwater.org/recycling/](http://www.bcwater.org/recycling/) for more information.

Act: Remember to keep recyclable items loose in your recycle cart. Do not bag them. Plastic bags or films are not accepted in your curbside recycle program

SUNDAY	MONDAY	TUESDAY	WEDNESDAY	THURSDAY	FRIDAY	SATURDAY
<b>1</b>  Daylight savings time ends	<b>2</b>	<b>3</b>	<b>4</b>	<b>5</b>	<b>6</b>	<b>7</b>
<b>8</b>	<b>9</b>	<b>10</b>	<b>11</b>  Veterans Day	<b>12</b>	<b>13</b>	<b>14</b>
<b>15</b>	<b>16</b>	<b>17</b>	<b>18</b>	<b>19</b>	<b>20</b>	<b>21</b>
<b>22</b>	<b>23</b>	<b>24</b>	<b>25</b>	<b>26</b>  Thanksgiving Day	<b>27</b>	<b>28</b>
<b>29</b>	<b>30</b>					

**OCTOBER**

Su	Mo	Tu	We	Th	Fr	Sa
				1	2	3
4	5	6	7	8	9	10
11	12	13	14	15	16	17
18	19	20	21	22	23	24
25	26	27	28	29	30	31

**DECEMBER**

Su	Mo	Tu	We	Th	Fr	Sa
		1	2	3	4	5
6	7	8	9	10	11	12
13	14	15	16	17	18	19
20	21	22	23	24	25	26
27	28	29	30	31		



**2026**

For more information on how you can do your part

visit the Battle Creek Area Clean Water Partners at [www.bcwater.org](http://www.bcwater.org)





A very cold day on Waubascon Creek  
by Isobel Guck





# December

"In every walk with nature one receives far more than he seeks."

-John Muir

Tip: DE-ICING: Shovel snow and ice often to limit use of sand, salt, and de-icing chemicals.

Act: Visit the Salt Watch site to learn more about salt's impact on our water resources: <https://iwla.org/salt-watch/>

SUNDAY

MONDAY

TUESDAY

WEDNESDAY

THURSDAY

FRIDAY

SATURDAY

NOVEMBER						
Su	Mo	Tu	We	Th	Fr	Sa
1	2	3	4	5	6	7
8	9	10	11	12	13	14
15	16	17	18	19	20	21
22	23	24	25	26	27	28
29	30					

JANUARY						
Su	Mo	Tu	We	Th	Fr	Sa
					1	2
3	4	5	6	7	8	9
10	11	12	13	14	15	16
17	18	19	20	21	22	23
24	25	26	27	28	29	30

1	2	3	4	5
8	9	10	11	12
15	16	17	18	19
22	23	24	25	26
29	30	31		


First day of winter

Christmas Eve

Christmas Day  
Hanukkah Begins

Kwanzaa Begins

New Years Eve



2026

For more information on how you can do your part

visit the Battle Creek Area Clean Water Partners at [www.bcwater.org](http://www.bcwater.org)



# RESOURCES

## CITY OF BATTLE CREEK

### City Hall

10 N. Division St.  
Battle Creek, MI 49014  
269-966-3311

### Utility Billing

269-966-3366

### Department of Public Works (DPW)

150 S. Kendall St.  
Battle Creek MI 49037  
269-966-3311

### DPW Water/Meter Shop Departments

269-966-3506

### Wastewater Treatment Plant

269-966-3513



## CITY OF ALBION

112 W. Cass St.  
Albion, MI 49224  
517-629-5535  
cityofalbionmi.gov

## CITY OF MARSHALL

323 W. Michigan Ave.  
Marshall, MI 49068  
269-781-5183  
cityofmarshall.com

## CITY OF SPRINGFIELD

601 Ave. A  
Springfield, MI 49037  
269-965-2354  
springfieldmich.com



Battle Creek Area Clean Water Partners



Scan QR Code to  
visit our website

## CALHOUN COUNTY

### CALHOUN COUNTY ROAD DEPARTMENT

13300 15 Mile Road  
Marshall, MI 49068  
269-781-9841  
calhouncountymi.gov/roads

### CALHOUN COUNTY PUBLIC HEALTH DEPARTMENT

George W. Toeller Building, Suite A100  
190 E. Michigan Ave.  
Battle Creek, MI 49014  
269-969-6370  
calhouncountymi.gov/publichealth

### CALHOUN COUNTY WATER RESOURCES COMMISSIONER

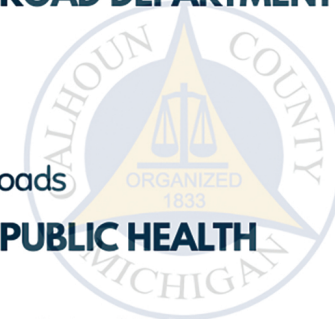
315 W. Green St.  
Marshall, MI 49068  
269-781-0790  
calhouncountymi.gov/wr

### CALHOUN COUNTY COMMUNITY DEVELOPMENT

315 W. Green St.  
Marshall, MI 49068  
269-781-0780  
calhouncountymi.gov/communitydevelopment

### CALHOUN COUNTY SOLID WASTE & RECYCLING

315 W. Green St.  
Marshall, MI 49068  
269-969-6395  
calhouncountymi.gov/recycling



Scan QR Code to  
visit our website



Scan QR Code to  
visit our website

